



ETD ... complete ... worldwide ... continuously growing ...
Exoplanet Transit Database
http://var.astro.cz/ETD

Known transitters:

- CoRoT-1 b
- CoRoT-10 b
- CoRoT-11 b
- CoRoT-12 b
- CoRoT-13 b
- CoRoT-17 b
- CoRoT-18 b
- CoRoT-19 b
- CoRoT-2 b
- CoRoT-20 b
- CoRoT-3 b
- CoRoT-4 b
- CoRoT-5 b
- CoRoT-6 b
- CoRoT-8 b
- CoRoT-9 b
- EPIC 218916923 b
- EPIC 228735255 b
- EPIC-203771098 b
- EPIC-203771098 c
- EPIC-210957318 b
- EPIC-211089792 b
- EPIC-212110888 b
- GJ1214 b
- GJ3470 b
- GJ436 b
- HAT-P-1 b
- HAT-P-10/WASP-11 b
- HAT-P-11 b
- HAT-P-12 b
- HAT-P-13 b
- HAT-P-14 b
- HAT-P-15 b
- HAT-P-16 b
- HAT-P-17 b
- HAT-P-18 b
- HAT-P-19 b
- HAT-P-2 b
- HAT-P-20 b
- HAT-P-21 b
- HAT-P-22 b
- HAT-P-23 b
- HAT-P-24 b
- HAT-P-25 b
- HAT-P-26 b
- HAT-P-27/WASP-40 b
- HAT-P-28 b
- HAT-P-29 b
- HAT-P-3 b
- HAT-P-30/WASP-51 b
- HAT-P-31 b
- HAT-P-32 b
- HAT-P-33 b
- HAT-P-34 b
- HAT-P-35 b
- HAT-P-36 b
- HAT-P-37 b
- HAT-P-38 b
- HAT-P-39 b
- HAT-P-4 b
- HAT-P-40 b
- HAT-P-41 b
- HAT-P-42 b
- HAT-P-43 b
- HAT-P-44 b
- HAT-P-45 b
- HAT-P-46 b
- HAT-P-49 b
- HAT-P-5 b
- HAT-P-50 b
- HAT-P-51 b
- HAT-P-52 b
- HAT-P-53 b
- HAT-P-54 b
- HAT-P-55 b
- HAT-P-56 b
- HAT-P-57 b
- HAT-P-6 b
- HAT-P-65 b
- HAT-P-66 b
- HAT-P-67 b
- HAT-P-7 b
- HAT-P-8 b
- HAT-P-9 b
- HATS-1 b
- HATS-11 b
- HATS-12 b
- HATS-18 b
- HATS-19 b
- HATS-20 b
- HATS-21 b
- HATS-22 b
- HATS-23 b
- HATS-24 b
- HATS-25 b
- HATS-26 b
- HATS-27 b

ETD - Exoplanet Transit Database

[Observers community](#) | [How to contribute to ETD](#) | [Model-fit your data](#) | [Transit predictions](#) | [KEPLER predictions](#) | [TESS Predictions](#)

HAT-P-9 b (Aur)

RA (J2000): **07 20 40.45**, DE (J2000): **+37 08 26.4**,
V = **12.3 mag**, dV = **0.0126 mag**, duration = **206 minutes**
Per = d, T0(HJD) =



15' x 15' image from the [Digitized Sky Survey](#) at the [STScI Archive](#).

Your ELONGITUDE (in deg): 0° - 360°

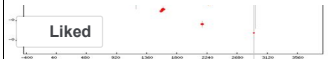
Your LATITUDE (in deg): 90° - 0° - -90°

Transits predictions for NEXT 365 days ([show previous year](#))
ELONGITUDE: 283° and LATITUDE: 39°

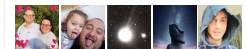
Transit occurs below 20° in the sky. | **During the daylight**. | **Observable**.

Tmid (HJD)	BEGIN (UT/h,A)	CENTER (DD.MM. UT/h,A)	END (UT/h,A)
2458901.684	22.02 2:42 (86°,SW)	22.02. 4:25 (66°,W)	22.02 6:08 (47°,W)
2458905.607	26.02 0:50 (75°,E)	26.02. 2:33 (85°,W)	26.02 4:16 (65°,W)
2458909.530	29.02 22:59 (58°,E)	01.03. 0:42 (77°,E)	01.03 2:25 (84°,W)
2458913.453	04.03 21:08 (40°,E)	04.03. 22:51 (59°,E)	05.03 0:34 (78°,E)
2458917.375	08.03 19:17 (23°,NE)	08.03. 21:00 (41°,E)	08.03 22:43 (60°,E)
2458921.298	12.03 17:26 (8°,NE)	12.03. 19:09 (24°,NE)	12.03 20:52 (42°,E)
2458925.221	16.03 15:35 (-4°,NE)	16.03. 17:18 (9°,NE)	16.03 19:01 (25°,NE)
2458929.144	20.03 13:44 (-12°,N)	20.03. 15:27 (-3°,NE)	20.03 17:10 (10°,NE)
2458933.067	24.03 11:52 (-13°,N)	24.03. 13:35 (-11°,N)	24.03 15:18 (-2°,NE)
2458936.989	28.03 10:01 (-8°,NW)	28.03. 11:44 (-13°,N)	28.03 13:27 (-11°,N)
2458940.912	01.04 8:10 (2°,NW)	01.04. 9:53 (-9°,N)	01.04 11:36 (-13°,N)
2458944.835	05.04 6:19 (15°,NW)	05.04. 8:02 (1°,NW)	05.04 9:45 (-9°,N)
2458948.758	09.04 4:28 (31°,NW)	09.04. 6:11 (14°,NW)	09.04 7:54 (0°,NW)
2458952.681	13.04 2:37 (49°,W)	13.04. 4:20 (30°,NW)	13.04 6:03 (13°,NW)

What's new: | [Archive](#)



You and 29 other friends like this



ETD - Exoplanet Transit Database
about 5 months ago

Are you fan of Exoplanet Transit Database or other activities on website var2.astro.cz?

Current statistics:
(22. 2. 2020)

of objects: **352**
of transits: **9729**

DQ	# of transits
1	1909
2	1749
3	3972
4	1221
5	869